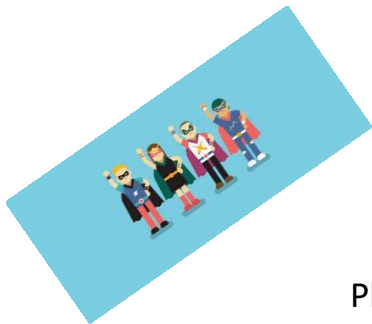


Year 2

Home Learning Grid W.B. 18/05/20

Theme - Heroes

Please choose 2 activities to complete each day if possible.



	<p>Can you practice phase 3 Letters and Sounds? Write out these sounds and any words you can think of.</p> <p>https://www.youtube.com/watch?v=vU2vWZKS7rY</p> <p>Can you watch these Phase 3 videos and play the word games?</p> <p>https://www.bbc.co.uk/bitesize/topics/zvg9bdm</p> <p>http://www.familylearning.org.uk/phonics_games.html</p>	<p>Can you make your own word search about heroes?</p> <p>Use the list of 'People who help you' to complete your own word search. Fill the squares in with the words first, then fill the gaps with random letters.</p>  <p>You could post the word search to a friend or family member to complete?</p>
	<p>Can you complete the Sumdog Maths task set by your teacher?</p> <p> Telling the time – o'clock and half past</p>	<p>Can you make your own clock using either recyclable or natural materials?</p>  <p>Can you move the hands to tell different times? (o'clock and half past)</p>
	<p>Can you make a natural masterpiece?</p> <p>Put your pencils and crayons to one side and look for natural art materials instead. Collect fallen leaves, blossom, petals & sticks and use them to make a picture or sculpture. You could use the objects as 'stampers or paintbrushes' to create interesting patterns and effects.</p>	<p>Can you have a Pizza Party?</p>  <p>Follow the Barefoot algorithm (instructions), then have fun mixing it up and debugging it!</p> <p>Adult supervision required. Please use the resources provided on our Google Classroom page.</p> 
	<p>Go on a walk for your daily exercise. Can you create a map of where you went?</p>  <p>Where did your walk start? What landmarks did you see? Can you draw out your route?</p>	<p>Can you write a list of all the people who help you in your everyday life?</p>  <p>Write down what these special people do to help you.</p>
	<p>Can you make your own board game?</p> <p>Challenge yourself to make your own snakes and ladders board game. Can you play the game with a family member showing respect to the rules?</p>  <p><i>*Game template on Google Classroom*</i></p>	<p>Can you join in a PE session with Joe Wicks https://www.youtube.com/watch?v=3Z05939ZMbE</p> <p>or a Cosmic Yoga Trolls adventure with Jamie? </p> <p>https://www.youtube.com/watch?v=U9Q6FKF12Qs</p>
	<p>Can you customise your Yeti Den into an amazing submarine and join the Yetis for a deep-sea adventure?</p>  <p>Go on this link to find lots of Yet and Dot activities and challenges to do at home.</p> <p>*SUBMARINE DEN*</p> <p>https://www.growthmindsetyeti.com/blanket-den-challenge</p>	<p>Can you pick your favourite song from Week 1 and complete the attached activities?</p>  <p>https://www.outoftheark.co.uk/ootam-at-home/?utm_source=homepage&utm_campaign=ootamathome2&utm_medium=banner</p>

Other information:

- This is also saved in the Google Classroom. Here you can access any help documents and speak to your teacher between 9am and 3pm from Monday to Friday.
- For extra work, please access the lessons on [BBC Bitesize](#).