

### Sporting Events 2022-23

- WASPS Football and Netball Competitions
- TAG Rugby
- Ballet and Dance Workshops
- WASPS Tennis
- Indoor Athletics Meetings
- Dragon Sports Netball Events
- Cross Country
- Hockey Competitions
- Area Sports
- Cricket and Rounders Competitions
- Cluster Multi-Sports Days



This Annual Report to Parents has been produced in accordance with the School Governors' Annual Reports (Wales) Regulations 2011.

### School Prospectus

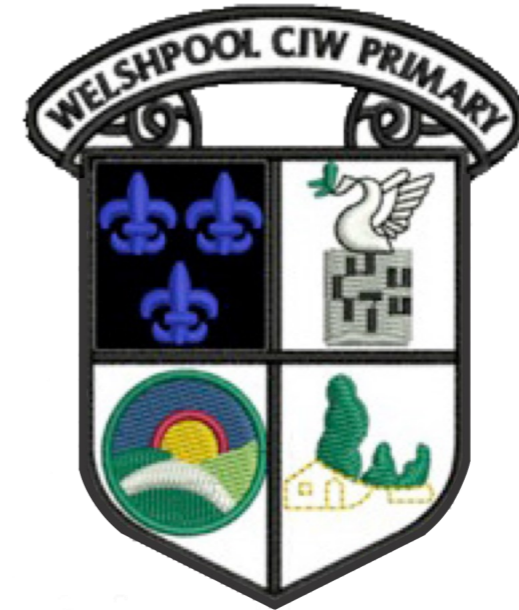
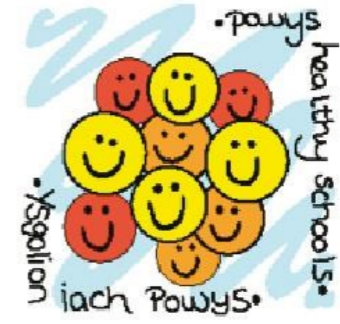
The school prospectus is updated at least annually in accordance with guidance. Copies of the school prospectus can be downloaded from the school website.

#### School Contact Details

Address: Salop Road, Welshpool, Powys. SY21 7FA  
 Telephone: 01938 538660  
 Email: [office@welshpool.powys.sch.uk](mailto:office@welshpool.powys.sch.uk)  
 Website: <https://welshpoolprimary.weebly.com>  
 Twitter: @WelshpoolCIWP



Bringing out the best in each other



Bringing out the best in each other

## Annual Report to Parents and Carers 2022-23

Discover Perseverance Respect



[www.ASDinfoWales.co.uk](http://www.ASDinfoWales.co.uk)

## Who is on the Governing Body?

Type of Governor	Surname	Forenames	Title	Joining Date	Expected Occ End Date
Community Governor	Longshadow	Galahad	Mr	19/10/2016	15/09/2025
Foundation Governor	Jones	Diane	Rev	27/01/2021	26/01/2025
Foundation Governor	Prince	Julie	Mrs	31/03/2022	30/03/2026
Foundation Governor	Hawkins	Helen	Rev	25/03/2022	24/03/2026
Headteacher Governor	Baldwin	Justine	Mrs	01/09/2011	N/A
LEA Governor	McWhinnie	Brendan	Mr	05/05/2021	01/07/2025
LEA Governor	Jump	Francesca	Ms	26/07/2007	15/09/2025
LEA Governor	Harkness	Suzi	Mrs	01/03/2012	13/03/2026
Minor Authority Governor	Evans	Harry	Mr	28/07/2021	27/07/2025
Parent Governor	Saunders	Rob	Rev	03/02/2022	02/02/2026
Parent Governor	Brookbank	Chris	Mr	23/10/2022	22/10/2026
Parent Governor	Longshadow	Barbara	Mrs	23/10/2022	22/10/2026
Staff Governor	Cooper	Cathy	Mrs	29/10/2022	28/10/2026
Teacher Governor	Terry	Wendi	Ms	01/11/2013	14/09/2025

### A Message from the Chair of Governors

Dear Parent/Carer,

It gives me great pleasure as Chair of the Governing Body to say a few words about our Church in Wales Primary School.

Our school seeks to promote the well-being of every person in the school. With each child in our care, we strive to develop self-esteem, support social development, stimulate the inquiring mind and plan for academic success. We as parents/carers, teachers and governors have the responsibility to ensure that all our children receive the best start in life so that they can achieve their full potential.

In February Mrs Baldwin resigned as Headteacher to take up the position of Diocesan Director of Education for the Diocese of St Asaph. We would like to thank her for the many years she dedicated to our school. The Governors appointed Mrs Tuffin as the new Headteacher and Mrs Terry as Deputy Headteacher. I would like to thank Mrs D Saunders and all the Friends of WCIWPS for their continued hard work in organising fundraising events.

Grant funding was received from Sports Wales to complete the field and extra funding was secured to allow us to buy a storage container to house the mobile flood lighting and other equipment needed, which will be used by the wider community. In February, Deputy Minister for Social Services Julie Morgan visited our Flying Start setting Tinytots, and to speak to staff and pupils about our exemplary work with Young Carers. Ms Morgan was accompanied by Council members and by representatives of the Local Authority including the Director of Education Mrs Lynette Lovell.

In May, our Eco Committee took part in the Climate Challenge Cymru project arranged by Eluned Morgan, Senedd Member for Mid and West Wales. We were fortunate to have Eluned Morgan visit the school to meet with the Eco Committee and to find out more about the work they were involved with. Welshpool Church in Wales Primary School were shortlisted as a finalist in the RSPB category! We have also received the Gold Quality Mark to celebrate and recognise our continued contribution to the Welsh Government's Food and Fun programme.

I would like to pay tribute to the Headteacher, the staff, the pupils, and the board of Governors, parents and carers who work hard to ensure that our Church in Wales Primary School is a happy and successful environment for our children. I hope you find this Governors Annual Report to Parents informative.

Yours faithfully,

*Francesca Jump*

Chair of Governors

**United Nations Convention on the Rights of a Child / Convention on the Rights of Persons with Disabilities.** Our school will promote knowledge and understanding of Part 1 of the UNCRC and UNCRPD.

### Welsh as a Second Language

Although we are an English medium school, children are encouraged to learn Welsh skills from the Foundation Phase through to key stage 2, increasingly using words, phrases and sentences in games and a variety of activities. The Area Welsh Teacher (Peripatetic) visits our school to work with the teachers, to plan and support the activities undertaken with the children. We have several members of staff whose first language is Welsh and we try to use as much Welsh as possible throughout the school day to work towards creating a bilingual environment. The children are introduced to their Welsh culture and heritage via stories, poetry and drama, visits and outside speakers. Saint

David's Day is a key celebration in the school year. The Welsh dimension of all areas of learning is a most important way to develop children's knowledge and understanding of their Welsh heritage.



### Additional Learning Needs

At Welshpool Church in Wales Primary School, we see pupils as individual learners and as such, every child will have individual needs. Therefore, teaching is differentiated to ensure that all pupils can make good progress, and

there is no streaming in any classes. The progress of pupils is continually assessed by the teachers as part of professional ALN meetings each week. If staff feel a child is experiencing any difficulties they will discuss this with parents/carers. They may then, in discussion with parents/carers, wish to refer the child to another professional such as the Educational Psychologist, Physiotherapist or Speech Therapist to help assess the child's needs further and put in place a plan of action. Sometimes a child needs more specific help and, in consultation with parents/carers and the Local Authority, a Statement of Educational Needs may be drawn up. The Local Authority is then legally obliged to provide the means to meet the needs set out in the Statement.

The school employs one teacher as a co-ordinator for matters concerning Additional Needs. There is a register of pupils with Additional Learning Needs which fully complies with the new ALN Code of Practice. All children on the ALN Register have Provision Maps to monitor progress which are set up by the Class Teacher on advice from the ALNCO. In addition to this, the two Specialist Teaching Centres on site have spaces for twelve pupils each. The school expects all pupils to aim higher, and therefore, our provision for pupils who show exceptional talent in any area are provided with opportunities to do so. This may be in curriculum subjects, but also in leadership, entrepreneurialism or emotional literacy.

### Policies Adopted by the Governing Body 2022-23

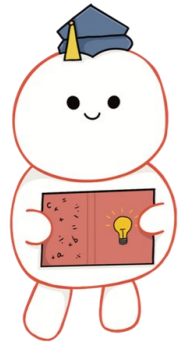
There are a range of statutory policies and documents which governing bodies are required by law to determine, adopt and implement. Policies and procedures adopted during 2022-22 were: Management of Change and Redundancy, Protocol and Guidance for School Dogs, Model Disciplinary, ALN and Inclusion, CLA, VSS, Safeguarding, Revised School Prospectus and the School Development Plan

Ambitious, capable learners, ready to learn throughout their lives.

Enterprising, creative contributors, ready to play a full part in life and work.

Ethical, informed citizens of Wales and the world.

Healthy, confident individuals, ready to lead fulfilling lives as valued members of society.



**The Statements of What Matters**

Our curriculum will provide rich opportunities and authentic learning experiences to develop the key concepts, knowledge and skills as described in the statements of what matters and in line with the Statements of What Matters Code.

**Areas of Learning and Experience**

Our curriculum will provide learning experiences through the 6 AoLEs of:

- Languages, Literacy and Communication
- Expressive Arts
- Science and Technology
- Humanities
- Maths and Numeracy
- Health and Wellbeing

**Relationships and Sexuality Education (RSE)**

RSE in our school makes use of best practice, evidence-based research that shows that working in a creative, co-constructed way with learners best reflects and supports their needs. We will embed RSE across all AoLEs and embrace the RSE guidance and the mandatory RSE Code, following the three cross cutting themes of ‘Relationships and Identity’, ‘Sexual Health and Wellbeing’ and ‘Empowerment, Safety and Respect’. Our RSE provision is positive and empowering and will play a vital role in supporting all learners to realise the four purposes as part of a whole-school approach.

**Religion, Values and Ethics (RVE)**

RVE is a statutory requirement of the Curriculum for Wales and is mandatory for all learners from ages 3 to 16. There is no parental right to request that a child is withdrawn from RVE in the Curriculum for Wales. As RVE is a locally determined subject, the agreed syllabus specifies what should be taught in RVE within the local authority and our curriculum will reflect this guidance.

School Development Plan 2021-22	Equality Objectives 2020-2024
<p><b>Priority 1:</b></p> <p>To broaden the range and quality of teaching approaches to include immersion and the use of real life and outdoor contexts.</p>	<p><b>Equality Objective 1</b></p> <p>Ensure that vulnerable pupils (where wellbeing could be barrier to learning) achieve their targeted outcomes</p>
<p><b>Priority 2:</b></p> <p>To ensure leadership and management arrangements, including the role of the governing body and self-evaluation, are effective and robust, focusing on strategic direction and measuring impact.</p>	<p><b>Equality Objective 2</b></p> <p>Involve the diverse community of our school through close partnership working</p>
<p><b>Priority 3:</b></p> <p>To raise standards in reading and spelling and ensuring equity in attainment across all learners including those with ALN and EAL.</p>	<p><b>Equality Objective 2</b></p> <p>To ensure that language is not a barrier to learning where English is not the first language of our pupils and families</p>
<p><b>Priority 4:</b></p> <p>To work together as a cluster of schools to ensure continuity and high expectations in the development of the CfW.</p>	



### After School Clubs

A range of after school clubs took place in the 2022-23 academic year. Bala Town Football Club ran football sessions after school for older pupils. Pyjama Drama ran a Rainbow Club for Reception pupils and Sunbeam Club for Years 1 and 2. We were also pleased to host the NYP Musical Theatre School. These experiences enrich children's out-of-school experiences and support health and wellbeing. During the 2022-23 school year, the school continued to host the Disability and Inclusion Club in the Community Room and the MUGA, which are co-hosted by WRU and Action for Children.



### Uniform

We remain proud of our Fairtrade school uniform. We were the first school in Wales to open with Fairtrade uniform. As a Governing Body we proudly support the wearing of our Fairtrade school uniform! We think that this supports the curriculum well, as Fairtrade in principle underpins the core purpose of ensuring our learners are ethical informed citizens of the future. A PE kit is also part of our school uniform and is available to buy from the school, complete with its own PE draw string bag! We continue to offer a Uniform Bank to support families to provide good quality used uniform, school shoes and Winter coats.

### Our Links with the Church

Collective Worship is led by Welshpool Churches Together every Thursday, and these assemblies are based around the school's values for the month. A variety of approaches are adopted by different leaders, from storytelling to balloon modelling. The school also visit St Mary's Church regularly. We recognise that Welshpool Church in Wales Primary School is fully committed to inclusivity, welcoming children of all faiths and none. Our Prayer Space is used regularly to explore some of the big, (and not so big) questions in life, as well as a place to reflect on our wellbeing, and our community.



### Security, Health and Safety

All security, health and safety issues have been dealt with in a timely way. Fire equipment and electrical appliances are tested according to statutory regulations. Weekly testing of the school's sprinkler system is carried out by trained staff from the Local Authority. Specialist companies test the lift and the hoist equipment. Risk assessment are carried for all off-site activities and for Forest School sessions. EVOLVE is used for school visits to ensure that the school complies with local authority advice. Our Safeguarding Audit is reviewed regularly.

### The School Curriculum

The school teaches through the medium of English

#### Pre-School Provision:

##### Pre-School Provision is provided at Tinytots and Happitots

Tinytots is a Pre-school Flying Start setting for two-year-old children who have been identified through the health service, who may attend after their second birthday. Tinytots is a 12 place setting and is accessed through the Early Years entrance.

Children aged 3 to 4 years-old may attend Happitots before starting full-time education. A separate prospectus for the pre-school is available from Happitots. Happitots is a 32 place setting and is accessed through the Early Years entrance.

#### Full-time Provision:

Full-time education for pupils aged 4 to 11 years-old commences in the September after their fourth birthday. Admission to school is handled centrally by Powys Local Authority Admission Department.

#### Curriculum for Wales Summary

##### Our Inclusive Curriculum

Our curriculum will raise the aspirations for all learners as set out in our values. As a nurturing, reflective school we have considered how all learners will be supported to realise the ambitions and aspirations of the four purposes. We have strong provision for ALN and a clear understanding of how we will meet the needs of different groups of learners.

##### The Four Purposes

The four purposes are the starting point and aspiration for our school curriculum design. Our school aims to support all learners to become:

- **Ambitious, capable learners, ready to learn throughout their lives**
- **Enterprising, creative contributors, ready to play a full part in life and work**
- **Ethical, informed citizens of Wales and the world**
- **Healthy, confident individuals, ready to lead fulfilling lives as valued members of society.**

Our pupils have designed characters to represent each of the four purposes. Each character embodies the key ideas within its linked purpose. The characters give the children a fun, visual representation of the four purposes and help them to recognise connections between and across their learning experiences. You will see them popping up in lots of different contexts and can use them to aid discussions with your child about their learning.

## POWYS COUNTY COUNCIL TERM DATES 2023/2024

### Autumn Term:

Monday 4 September 2023 to Friday 27 October 2023

Half Term - Monday 30 October 2023 to Friday 3 November 2023

Monday 6 November 2023 to Thursday 21 December 2023

### Spring Term:

Tuesday 9 January 2024 to Friday 9 February 2024

Half Term - Monday 12 February 2024 to Friday 16 February 2024

Monday 19 February 2024 to Friday 22 March 2024

### Summer Term:

Monday 8 April 2024 to Friday 24 May 2024

Half Term - Monday 27 May 2024 to Friday 31 May 2024

Monday 3 June 2024 to Friday 19 July 2024

### Non Pupil Days:

Friday 1 September 2023

18th and 19th September 2023—Cluster Inset Days

Friday 22 December 2023

Monday 8 January 2024

Monday 24th June 2024—Cluster Inset Day

### Useful Dates:

Good Friday - Friday 29 March 2024

Easter Monday - Monday 1 April 2024

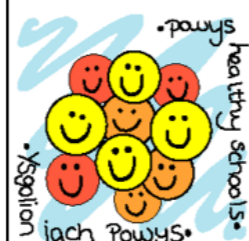
May Day Bank Holiday - Monday 6 May 2024

Spring Bank Holiday - Monday 27 May 2024



### Toilets

There are adequate toilet facilities on sites which are cleaned through Powys Catering and Cleaning Services.



Welshpool Church in Wales Primary School is proud to have achieved the National Quality Awarded for Healthy Schools.

## Visits, Visitors and Events September 2022 to July 2023

Rugby sessions with all pupils	KS2 Wheelchair Rugby
Visit to the Gurdwara in Telford for Yr 5/6 pupils as part of an RE project	Spectrum Workshops in Year 3/4
All pupils were involved in Show Racism the Red Card day	Super Ambassadors Visit to Llys Hafren
Free Food and Nutrition Course organized by one of the school's Family Support Co-ordinators, April Harding, and as a way to building networks between parents, and between parents and the school.	Year 3/4 Sinister Substances
Parents' Evening were held the week beginning 21.11.22 via Teams.	Mini Marathon
Baby Weaning Group for parents ad carers in Community Room	Foundation Phase Swimming
Baby Yoga and Baby Massage in the Community Room	Values Treats: Lambs, Chicks, Snake, Tortoise and Bearded Dragon
Mums' Matter mental health group in the Community Room	School Readiness Workshops
Weekly Disability Inclusion Club after school every Thursday with WRU and A4C	Beep Beep! Day in the Foundation Phase
Yr5/6 swimming every Wednesday throughout the Autumn term	Transition Visits to the Pre-School Settings
Weekly Choir practice run by Mrs. Tuffin	KS2 BBC National Orchestra of Wales Online Workshop
Transition visits from high school staff to Y5/6 (two visits so far this term)	KS2 WASPS Tennis Festival at WHS and The Flash
School hosts Newtown Youth Theatre for weekly sessions in the school hall	Fluoride Varnishing in the Foundation Phase
The school has started a Disney football scheme to encourage girls to become engaged with the sport	Coronation Service with St Mary's Church
Jungle Book pantomime for all pupils by M&M Theatrical Productions	Year 6 Cycling Proficiency
Bronze Sports Ambassador training for pupils	Pupil Voice Days
Attendance at virtual Super Ambassador event	Police Liaison Workshops with all year groups e.g. Griff's Story, People Who Help Us, Who? What? Where?, Safe Haven and Playing Safe
Tempest Photography in for individual school photos	Welsh Government Workshop with Year 4.
Pupils took part in Hockey tournament as well as a WASPS netball and football tournament	Wear Denim for Dementia
Friends of the School held a very successful Wheelathon	'Grandparents to School' Day
West Brom building society ran workshops for Y5/6 about Money Matters	Heights and Weights in Reception
Visit by Andrew Logan to discuss the new project for the school foyer	Prayer Project at St Mary's Church
Montgomery Wildlife staff carried out a hedgerow survey on the school grounds and have been advising in regards to how to manage the site carefully from a wildlife perspective	Baby Massage
Montgomery Wildlife ran workshops for Y3/4 pupils focusing on the school environment as a haven for wildlife	Year 5/6 WASPS Cricket at Maesydre
World Cup Workshops for all pupils run by Pyjama Drama	GRT Storytelling Workshop and Rugby Workshop
Attendance by Super Ambassadors and members of the Worship Leaders at the Remembrance Service at the Memorial Gardens, Welshpool	Year 3/4 WASPS Netball and Football at Guilsfield
	Transition Visit from WHS
	KS2 Choir and Stall at Welshpool Carnival
	Year 5/6 Multi Sports Day at Maesydre
	Impact Summer Tour
	Summer Fayre
	Year 5/6, Year 3/4 and Foundation Phase Sports Days – parents and carers invited
	Transition Day
	Open Parents' Meetings
	Year 6 Leavers' Disco and Leavers' Service

### Attendance Summary 2022-23

Attendance	Authorised Absences
87.05%	11.72%

### How is the school funded?

The Local Authority provides the school with a budget each financial year based on a number of factors including the number of children on roll, the number of children with additional learning needs and the school's capacity for pupils. The Governors and the Headteacher decide how the money is allocated and a budget is agreed which must be approved by the Local Authority. This budget is monitored at each Governing Body Meeting and the Headteacher attends termly meetings with council finance officers who also monitor the budget and provide monthly reports to the school. These reports identify any over-spends or surpluses in order that the budget can be adjusted to ensure that the school shows value for money.

### Budget Summary 2022-23 (March 2023 Position)

Pupil numbers	236
Funding received (total delegated funds)	£1,012,571
Other income including grants (PDG and EIG)	£143,996
Salaries and Wages	£980,094
Premises	£222,830
Resources (supplies, office and other expenses)	£74,682
	No Governors were paid expenses for their work or have applied for travel expenses as a result of training or meetings.

The school has a unique demographic for the area with 32% ALN, 38% FSM and 28% EAL.

Therefore, the need for additional classroom support in both English and additional languages is important in order to uphold the standards of learning and wellbeing for our pupils. Also on role are a

significant number of pupils with behavioural difficulties. This creates a need for pastoral support in order to avoid exclusions and to support the

nurture work carried out by the school. This work is recognised as good practice in the local authority, and is

being shared throughout the cluster of schools as an important part of our partnership working.



### Links with the Community

#### SEPTEMBER

Literacy Wales Competition at Powis Castle

#### OCTOBER

West Bromwich Building Society Money Workshops

Visit to the Gurdwara, Telford

#### NOVEMBER

Remembrance Day at Memorial Gardens

#### DECEMBER

WHS Christmas Concert

Year 3/4 Christingle at St Mary's Church

Carols in the Community

Young Promoters Scheme: The Night Before Christmas by Likely Story

Welshpool Winter Fair

UK Parliament Project

#### JANUARY

Teddy Francis Dicoese Project

#### FEBRUARY

Friends of the School Clothes Sale

#### MARCH

Choir Concert with The Fron Choir at St Marys

Trip to Rugby Union Wheelchair Rugby European Championship in Cardiff

#### APRIL

Mini Marathon for Lingen Davies

Suer Ambassadors at Llys Hafren

#### MAY

Dementia Friends Visits

Bring Your Grandparents to School Afternoon

#### JUNE

Paveways Awards

#### JULY

Archishops Young Leaders Award Tidy Up on Burgess Road Community Garden and Thank You Cards for the Services

WHS Summer Concert

Enterprise Group selling home grown vegetables at Town Hall

